



Department of Public Works  
**Engineering Division**  
Robert F. Phillips, P.E., City Engineer  
City-County Building, Room 115  
210 Martin Luther King, Jr. Boulevard  
Madison, Wisconsin 53703  
Phone: (608) 266-4751  
Fax: (608) 264-9275  
[engineering@cityofmadison.com](mailto:engineering@cityofmadison.com)  
[www.cityofmadison.com/engineering](http://www.cityofmadison.com/engineering)

---

**Deputy City Engineer**  
Gregory T. Fries, P.E.

**Deputy Division Manager**  
Kathleen M. Cryan

**Principal Engineer 2**  
John S. Fahrney, P.E.  
Christopher J. Petykowski, P.E.  
Janet Schmidt, P.E.

**Principal Engineer 1**  
Christina M. Bachmann, P.E.  
Mark D. Moder, P.E.  
James M. Wolfe, P.E.

**Facilities & Sustainability**  
Bryan Cooper, Principal Architect

**Mapping Section Manager**  
Eric T. Pederson, P.S.

**Financial Manager**  
Steven B. Danner-Rivers

May 26, 2020

NOTICE OF ADDENDUM  
ADDENDUM NO. 1  
CONTRACT NO. 8864

E. GORHAM STREET RESURFACING: UTILITIES

Revise and amend the contract document(s) for the above project as stated in this addendum, otherwise, the original document shall remain in effect.

**SPEC:**

Add following to the end of Section D:

**BID ITEM 90030: 16" PVC PRESSURE SANITARY SEWER PIPE**

**DESCRIPTION**

This work shall consist of install 16" AWWA C905 DR18 pipe in locations shown within the plan set or as called for in the special provisions. Installation of 16" AWWA C905 pipe shall be in accordance with the City of Madison Standard Specifications. All fittings and lateral wyes for use with pressure sanitary sewer pipe shall be in accordance with the 503.2(d) of the City of Madison Standard Specifications.

**METHOD OF PAYMENT**

16" PVC PRESSURE SANITARY SEWER PIPE shall be measure by the Linear Foot to the nearest whole foot from center of structure to center of structure acceptable installed.

**BASIS OF PAYMENT**

16" PVC PRESSURE SANITARY SEWER PIPE shall be measured as described above and shall be paid per the contract unit price which shall be full compensation for all materials, equipment, labor, and incidentals required to complete the work set forth in the description and City of Madison Standard Specifications.

**PROPOSAL:**

Action	Bid Item	Description
MODIFY	40391	REMOVE AND REPLACE 7 INCH CONCRETE SIDEWALK AND DRIVE - RESURFACING
REMOVE	50323	15" PVC PRESSURE SANITARY SEWER PIPE
MODIFY	50357	RECONNECT SANITARY SEWER LATERAL – PRESSURE PIPE
ADD	50801	UTILITY LINE OPENINGS (ULO)
ADD	90030	16" PVC PRESSURE SANITARY SEWER PIPE

**PLANS:**

Remove and insert revised plan sheets U1, U2, U3, & U6.

Please acknowledge this addendum on page E1 of the contract documents and/or in Section E: Bidder's Acknowledgement on Bid Express.

Electronic version of these documents can be found on the Bid Express web site at:

<http://www.bidexpress.com>

If you are unable to download plan revisions associated with the addendum, please contact the Engineering office at 608-266-4751 receive the material by another route.

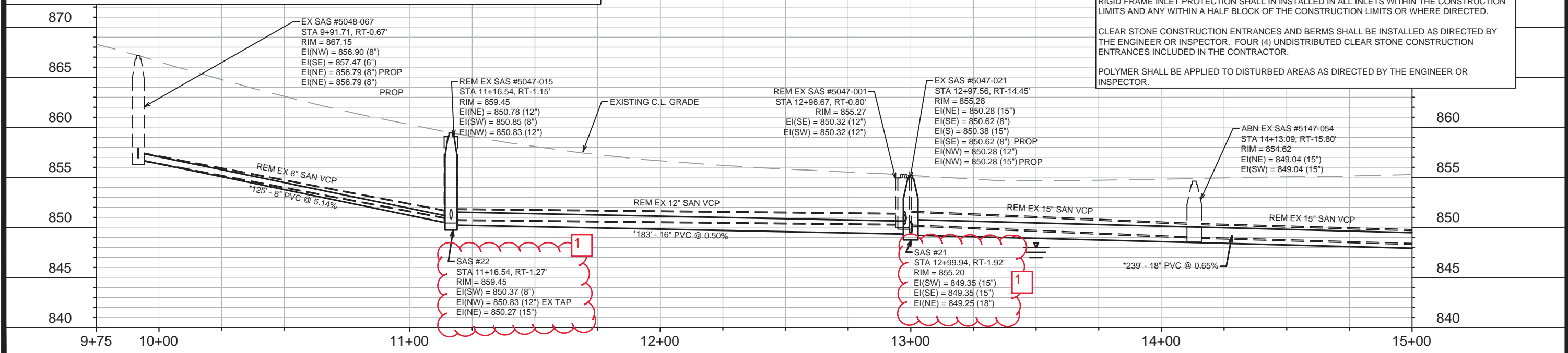
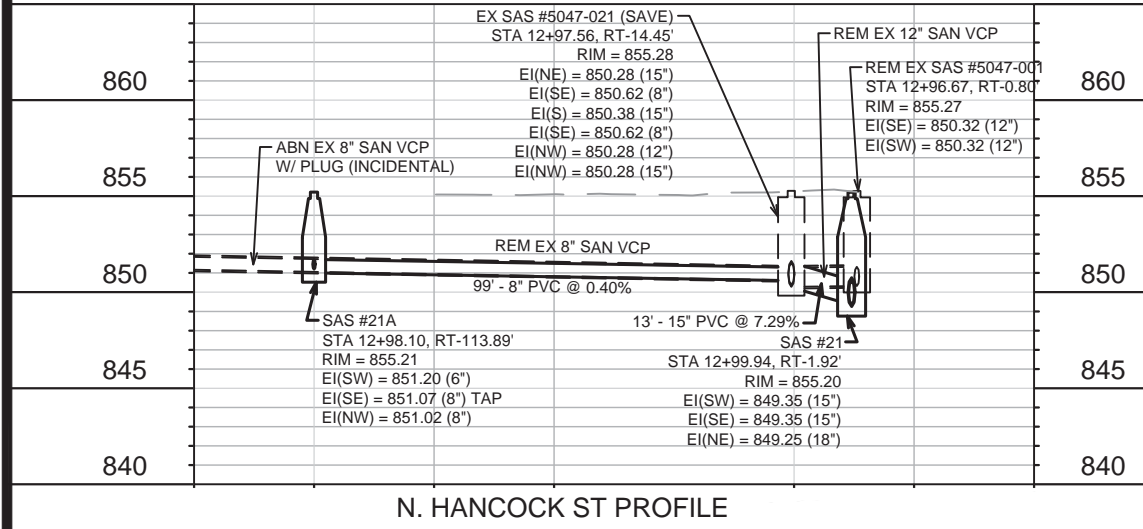
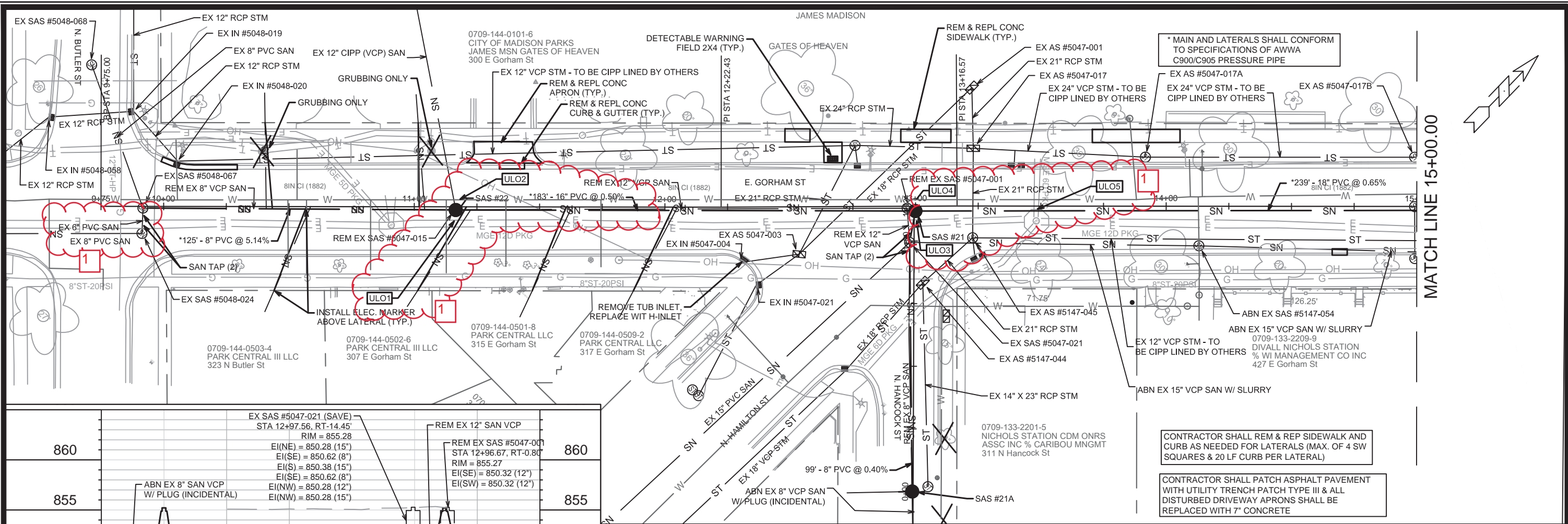
Sincerely,



---

Robert F. Phillips, P.E.  
City Engineer

RFP:KDF



**EROSION CONTROL NOTES (APPLIES TO ENTIRE PROJECT AREA):**

CONTRACTOR SHALL PROVIDE EROSION CONTROL PLANS FOR APPROVAL THAT ABIDES BY THESE NOTES AND THE CITY STANDARD SPECIFICATION.

EROSION CONTROL MEASURES SHALL BE IN PLACE PRIOR TO ANY OTHER CONSTRUCTION ACTIVITY

THE CONTRACTOR IS RESPONSIBLE FOR THE CONSTRUCTION AND MAINTENANCE OF ALL EROSION CONTROL MEASURES UNTIL FINAL ACCEPTANCE BY THE CITY OF MADISON.

THE CONTRACTOR SHALL INSTALL AND MAINTAIN EROSION CONTROL MEASURES IN ACCORDANCE WITH THE WDNR SOC STANDARDS AND CITY OF MADISON STANDARD SPECIFICATIONS.

RIGID FRAME INLET PROTECTION SHALL BE INSTALLED IN ALL INLETS WITHIN THE CONSTRUCTION LIMITS AND ANY WITHIN A HALF BLOCK OF THE CONSTRUCTION LIMITS OR WHERE DIRECTED.

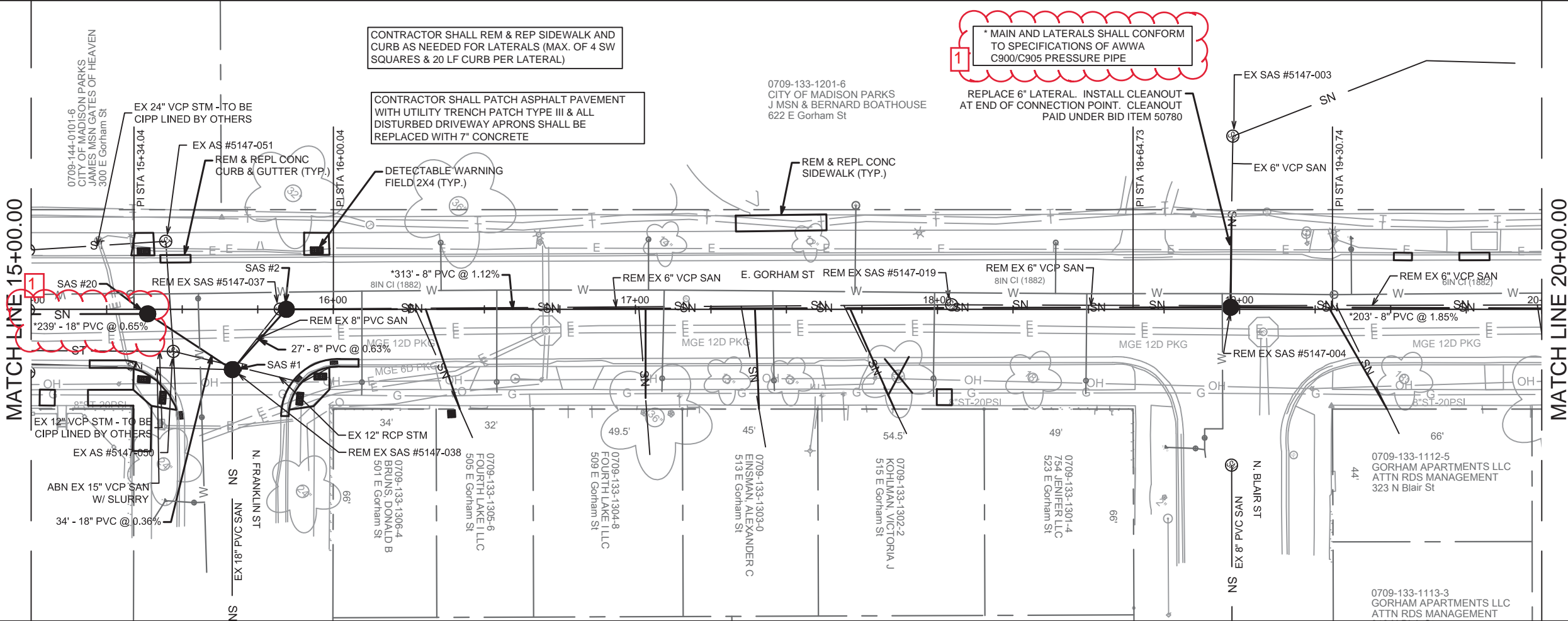
CLEAR STONE CONSTRUCTION ENTRANCES AND BERMS SHALL BE INSTALLED AS DIRECTED BY THE ENGINEER OR INSPECTOR. FOUR (4) UNDISTRIBUTED CLEAR STONE CONSTRUCTION ENTRANCES INCLUDED IN THE CONTRACTOR.

POLYMER SHALL BE APPLIED TO DISTURBED AREAS AS DIRECTED BY THE ENGINEER OR INSPECTOR.

CONTRACTOR SHALL REM & REP SIDEWALK AND CURB AS NEEDED FOR LATERALS (MAX. OF 4 SW SQUARES & 20 LF CURB PER LATERAL)

CONTRACTOR SHALL PATCH ASPHALT PAVEMENT WITH UTILITY TRENCH PATCH TYPE III & ALL DISTURBED DRIVEWAY APRONS SHALL BE REPLACED WITH 7" CONCRETE

12989	MADISON, WI	8864	U-1
CONTRACT NO. 12989			
UTILITY PLAN & PROFILE			
E. GORHAM STREET RESURFACING: UTILITIES			
M:\DESIGN\Projects\12756\CAD\SANITARY\12756SAN-Pipe Network.dwg			
12989			
U-1			



CONTRACTOR SHALL REM & REP SIDEWALK AND CURB AS NEEDED FOR LATERALS (MAX. OF 4 SW SQUARES & 20 LF CURB PER LATERAL)

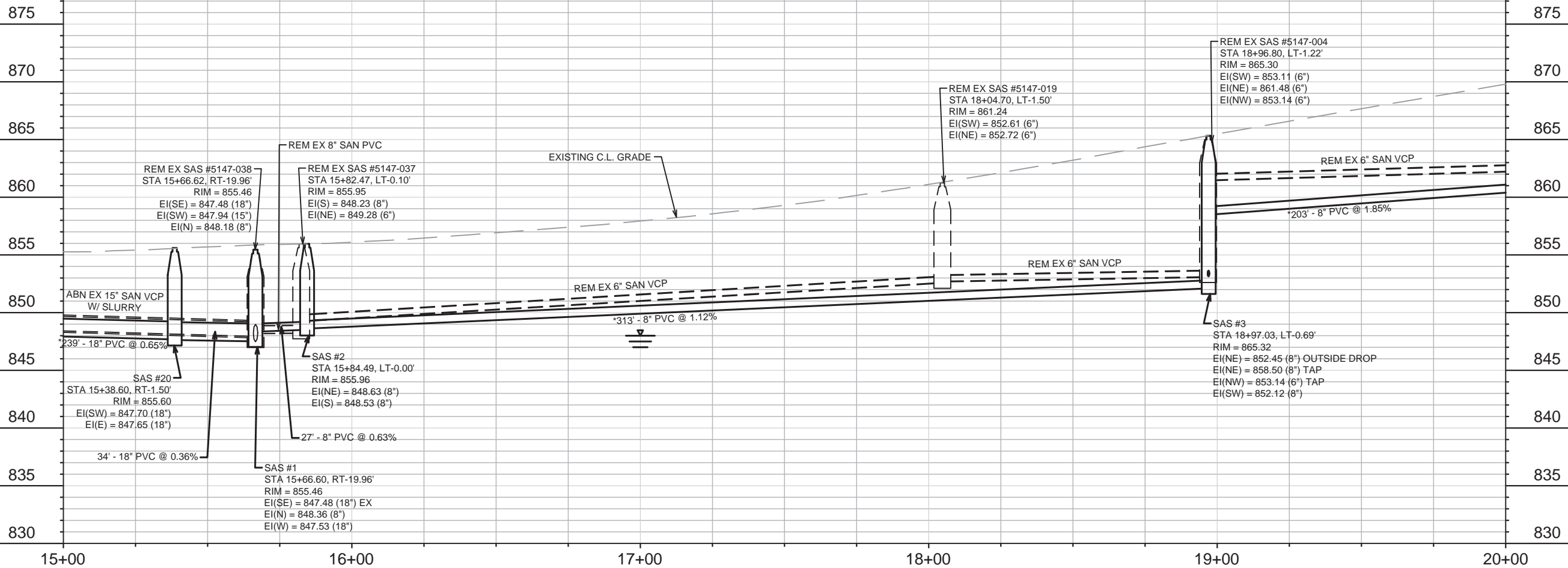
CONTRACTOR SHALL PATCH ASPHALT PAVEMENT WITH UTILITY TRENCH PATCH TYPE III & ALL DISTURBED DRIVEWAY APRONS SHALL BE REPLACED WITH 7" CONCRETE

\* MAIN AND LATERALS SHALL CONFORM TO SPECIFICATIONS OF AWWA C900/C905 PRESSURE PIPE

REPLACE 6" LATERAL. INSTALL CLEANOUT AT END OF CONNECTION POINT. CLEANOUT PAID UNDER BID ITEM 50780

MATCHLINE 15+00.00

MATCHLINE 20+00.00



DATE	BY
5-26-20	KDF
REVISION	DATE
12989	5/26/2020 9:26 AM
Scale:	1" = 40'

12989  
MADISON, WI  
8864  
CONTRACT NO.:

UTILITY PLAN & PROFILE  
E. GORHAM STREET RESURFACING: UTILITIES  
M:\DESIGN\Projects\12756\CAD\Sanitary\12756SAN-Pipe Network.dwg

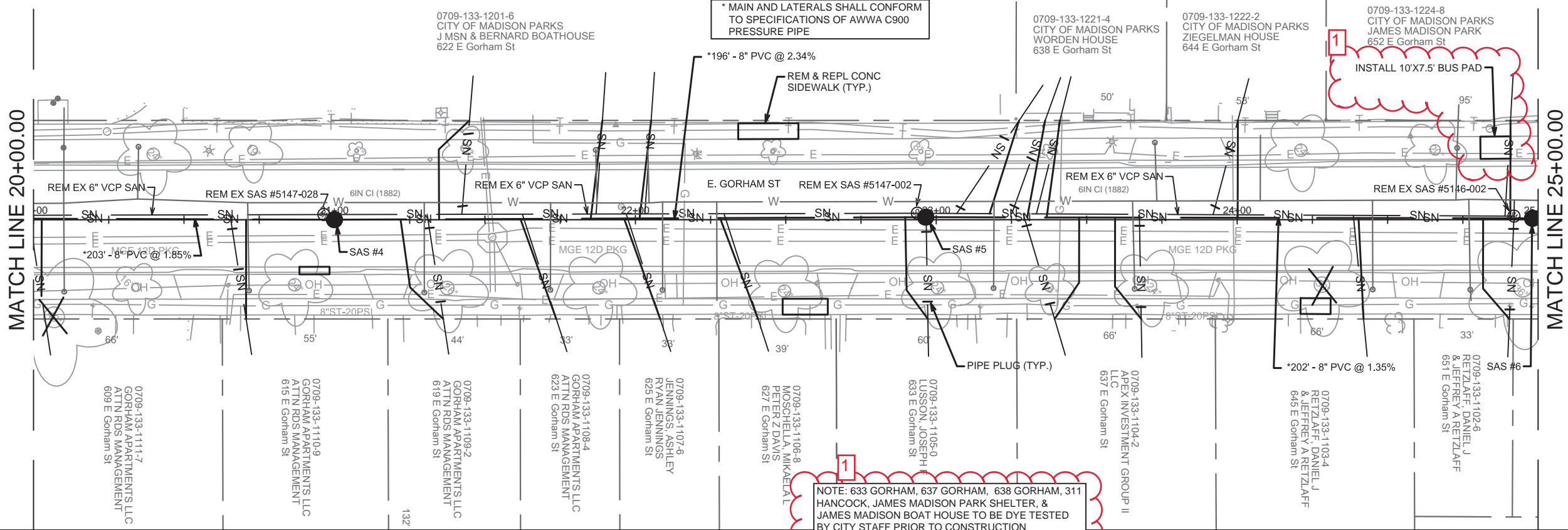


12989  
U-2

CONTRACTOR SHALL PATCH ASPHALT PAVEMENT WITH UTILITY TRENCH PATCH TYPE III & ALL DISTURBED DRIVEWAY APRONS SHALL BE REPLACED WITH 7" CONCRETE

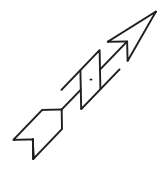
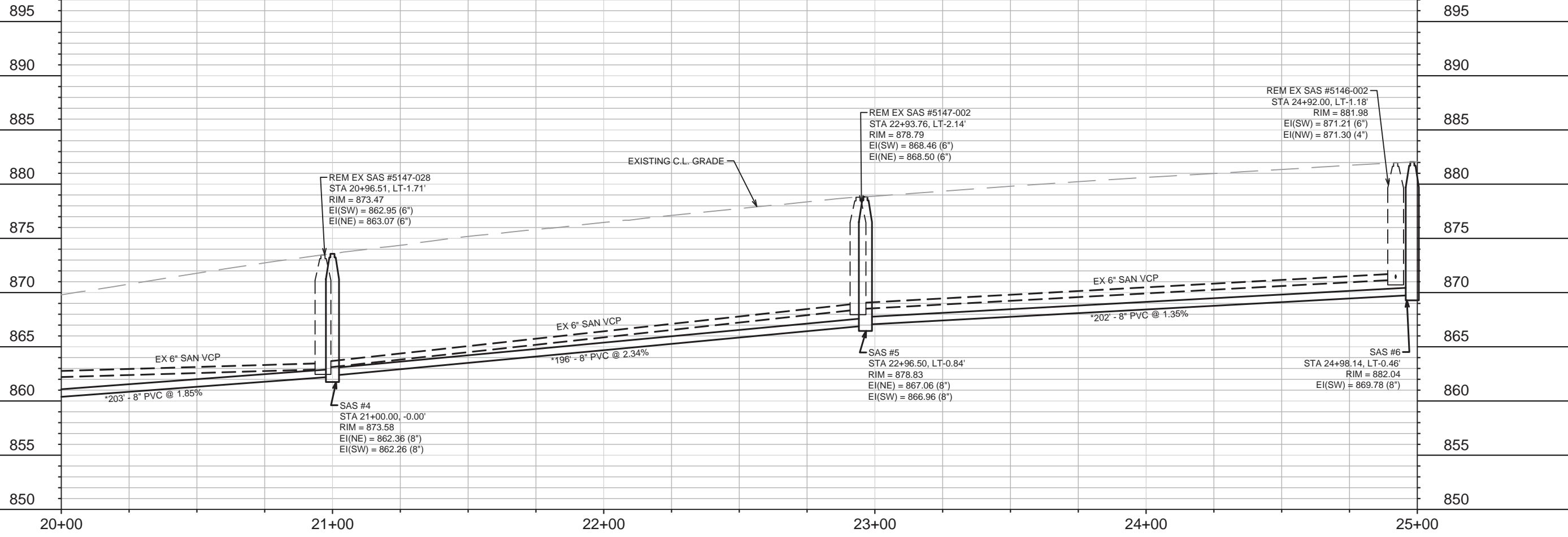
CONTRACTOR SHALL REM & REP SIDEWALK AND CURB AS NEEDED FOR LATERALS (MAX. OF 4 SW SQUARES & 20 LF CURB PER LATERAL)

\* MAIN AND LATERALS SHALL CONFORM TO SPECIFICATIONS OF AWWA C900 PRESSURE PIPE



0709-133-1224-8  
CITY OF MADISON PARKS  
JAMES MADISON PARK  
652 E Gorham St  
INSTALL 10'X7.5' BUS PAD

NOTE: 633 GORHAM, 637 GORHAM, 638 GORHAM, 311 HANCOCK, JAMES MADISON PARK SHELTER, & JAMES MADISON BOAT HOUSE TO BE DYE TESTED BY CITY STAFF PRIOR TO CONSTRUCTION



MARK	REVISION	DATE	BY
	BUS PAD ADDED, LAT. UPDATES	5-26-2020	KDF
Designed By:	KDF	Date:	5/26/2020 9:40 AM
Scale:	1" = 40'		
12989			U-3

12989  
MADISON, WI  
8864  
CONTRACT NO:

UTILITY PLAN & PROFILE  
E. GORHAM STREET RESURFACING: UTILITIES  
M:\DESIGN\Projects\12756\CAD\Sanitary\12756SAN-Pipe Network.dwg



12989  
U-3

# SANITARY SEWER SCHEDULE

\*REV 5/26/20 KDF

E. GORHAM STREET RESURFACING: PROJECT NO. 11865	SHEET NO. U-6
SANITARY SEWER SCHEDULE	
CITY OF MADISON	

## PROPOSED SANITARY STRUCTURES

SAS NO.	STATION	LOCATION (OFFSET)	TOP OF CASTING	E.I.	DEPTH	NOTES
<b>E. GORHAM STREET</b>						
SAS #1	15+66.60	RT-19.96	855.46	847.48	7.98	[1], [2]
SAS #2	15+84.49	CL	855.96	848.53	7.43	[1], [2]
SAS #3	18+97.03	LT-0.69	865.32	852.12	13.20	OUTSIDE DROP
SAS #4	21+00.00	CL	873.58	862.26	11.32	-
SAS #5	22+96.50	LT-0.84	878.83	866.96	11.87	-
SAS #6	24+98.14	LT-0.46	882.04	869.78	12.26	-
SAS #20	15+38.60	RT-1.50	855.6	847.65	7.95	[1], [2]
* SAS #21	<b>12+99.94</b>	<b>RT-1.92</b>	<b>855.2</b>	849.25	<b>5.95</b>	-
SAS #21A	12+98.10	RT-113.89	855.21	851.02	4.19	-
* SAS #22	<b>11+16.54</b>	<b>RT-1.27</b>	<b>859.45</b>	850.27	<b>9.18</b>	-
SAS #50	32+24.51	RT-1.75	862.74	853.03	9.71	-
SAS #51	31+70.64	RT-5.03	865.57	855.83	9.74	[3]
SAS #52	30+57.62	RT-4.25	871.78	861.91	9.87	[3]
SAS #53	28+11.90	RT-3.27	881.00	863.25	17.75	[3]
SAS #54	26+26.90	RT-2.91	882.58	873.60	8.98	[3]

## PROPOSED SANITARY PIPES

FROM (DNSTM)	TO (UPSTM)	DWNSTRM E.I.	UPSTRM E.I.	PLAN (PAY) LGTH (FT)	SLOPE (%)	PIPE SIZE	PVC TYPE	NOTES
<b>E. GORHAM STREET</b>								
SAS #1	SAS #2	848.36	848.53	27	0.63%	8"	SDR-35	-
SAS #2	SAS #3	848.63	852.12	313	1.12%	8"	C900	-
SAS #3	SAS #4	858.50	862.26	203	1.85%	8"	C900	-
SAS #4	SAS #5	862.36	866.96	197	2.34%	8"	C900	-
SAS #5	SAS #6	867.06	869.78	202	1.35%	8"	C900	-
SAS #1	SAS #20	847.53	847.65	34	0.36%	18"	SDR-35	-
SAS #20	SAS #21	847.70	849.25	239	0.65%	18"	C900	-
* SAS #21	SAS #22	849.35	850.27	183	0.50%	16"	C900	-
SAS #22	EX SAS #5048-067	850.37	856.79	125	5.15%	8"	C900	-
* SAS #21	EX SAS #5047-021	849.35	850.28	13	7.29%	15"	SDR-35	-
EX SAS #5047-021	SAS #21A	850.62	851.02	99	0.40%	8"	SDR-35	-
SAS #50	SAS #51	853.13	855.83	54	5.00%	8"	C900	-
SAS #51	SAS #52	855.93	861.91	113	5.30%	8"	SDR-35	-
SAS #52	SAS #53	862.02	863.25	246	0.50%	8"	SDR-26	-
SAS #53	SAS #54	863.35	873.60	185	5.54%	8"	SDR-26	-

## SANITARY STRUCTURE REMOVALS & ABANDONMENTS

STRUCTURE ID NO.	STATION	LOCATION (OFFSET)	TOP OF CASTING	E.I.	DEPTH	NOTES
<b>E. GORHAM STREET</b>						
SAS #5047-015	11+16.54	RT-1.15	859.45	850.78	8.67	REMOVE
SAS #5047-001	12+96.67	RT-0.80	855.27	850.32	4.95	REMOVE
SAS #5147-054	14+13.09	RT-15.80	854.62	849.04	5.58	ABANDON
SAS #5147-038	15+66.62	RT-19.96	855.46	847.48	7.98	REMOVE
SAS #5147-037	15+82.47	LT-1.00	855.95	848.23	7.72	REMOVE
SAS #5147-019	18+04.70	LT-1.50	861.24	852.61	8.63	REMOVE
SAS #5147-004	18+96.80	LT-1.22	865.30	853.11	12.19	REMOVE
SAS #5147-028	20+96.51	LT-1.71	873.47	862.95	10.52	REMOVE
SAS #5147-002	22+93.76	LT-2.14	878.79	868.46	10.33	REMOVE
SAS #5146-002	24+92.00	LT-1.18	881.98	871.21	10.77	REMOVE
SAS #5146-006	26+24.68	LT-0.60	882.61	874.49	8.12	REMOVE
SAS #5146-008	28+15.72	LT-14.58	880.90	865.00	15.90	ABANDON
SAS #5146-005	28+53.54	LT-0.43	880.20	871.04	9.16	REMOVE
SAS #5146-007	30+36.54	LT-13.59	872.87	863.66	9.21	ABANDON
SAS #5146-004	30+56.43	LT-0.80	871.93	863.37	8.56	REMOVE
SAS #5246-024	32+24.52	RT-1.79	862.74	853.03	9.71	REMOVE

## SANITARY PIPES REMOVALS & ABANDONMENTS

REMOVE FROM	REMOVE TO	LGTH (FT)	PIPE SIZE	PIPE TYPE	PAID (Y/N)	NOTES
<b>E. GORHAM STREET</b>						
SAS #5048-067	SAS #5048-024	10	6"	PVC	N	REMOVE
SAS #5047-015	SAS #5048-067	125	8"	VCP	N	REMOVE
SAS #5047-001	SAS #5047-015	180	12"	VCP	N	REMOVE
SAS #5047-021	SAS #5047-001	12	12"	VCP	N	REMOVE
SAS #5047-021	SAS #21A	99	8"	VCP	N	REMOVE
SAS #5147-054	SAS #5047-021	110	15"	VCP	Y	ABAN W/ SLURRY (5CY)
SAS #5147-038	SAS #5147-054	149	15"	VCP	Y	ABAN W/ SLURRY (6.8CY)
SAS #5147-038	SAS #5147-037	21	8"	PVC	N	REMOVE
SAS #5147-037	SAS #5147-019	218	6"	VCP	N	REMOVE
SAS #5147-019	SAS #5147-004	88	6"	VCP	N	REMOVE
SAS #5147-004	SAS #5147-028	195	6"	VCP	N	REMOVE
SAS #5147-028	SAS #5147-002	193	6"	VCP	N	REMOVE
SAS #5147-002	SAS #5146-002	194	6"	VCP	N	REMOVE
SAS #5146-005	SAS #5146-006	224	6"	VCP	N	REMOVE
SAS #5146-004	SAS #5146-005	199	6"	VCP	N	REMOVE
SAS #5246-024	SAS #5146-004	164	6"	VCP	N	REMOVE
SAS #5146-007	SAS #5146-008	216	6"	VCP	Y	ABAN W/ SLURRY (1.6CY)
SAS #5146-004	SAS #5146-007	20	6"	VCP	Y	ABAN W/ SLURRY (0.2CY)

## \* UTILITY LINE OPENINGS - ULOs (5 ADDITIONAL INDISTRIBUTED ULOs INCLUDED)

ULO NO.	STATION	LOCATION TYPE (OFFSET)	TYPE	TOP ELEV.	NOTES
<b>E. GORHAM STREET</b>					
ULO1	11+16.25	RT-5.35	ELECT DUCT	-	-
ULO2	11+17.80	LT-2.80	WATER	-	-
ULO3	13+00.25	RT-5.50	ELECT DUCT	-	-
ULO4	13+00.10	LT-2.65	WATER	-	-
ULO5	13+48.25	RT-1.35	ELECT STRUCT	-	-

## SPECIFIC NOTES

- [1] INSTALL INTERNAL CHIMNEY SEAL PER S.D.D. 5.7.17
- [2] INSTALL EXTERNAL SEWER ACCESS STRUCTURE JOINT SEAL
- [3] PROVIDE OFFSET CONE TO PLACE CONE AT EDGE OF TRAVEL LANE